

# HOW TO *create a* Blossom BICYCLE



you will need:



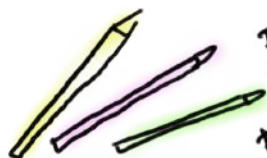
Scissors



stapler



tape



pencils  
or  
pens



zip/cable  
tie



plastic  
packaging  
bind



OR

light  
paper



OR

OR



pom poms



feathers

Artwork  
Created by



PERFORMER • MAKER • FACILITATOR

**CAITLIN  
STRONGARM**

[www.caitlinstrongarm.com](http://www.caitlinstrongarm.com)

# THE BASICS

---

①

If you're working with the plastic packaging binds, take your scissors and snip the corners so that they're nice and rounded, not pointy.



②

Take your blossom material - this could be fabric, crepe paper, a recycled plastic wrapper - and gently scrunch it up to make a flower shape.

Gathering it in the middle and making loose folds works best.



③

Take your plastic packaging bind stem and put it in the gathered flower head, then staple them



NOTE: if you're working with cable/zip-ties instead, just staple the flower head on its own. We'll attach it to the zip tie once it's on the bike.



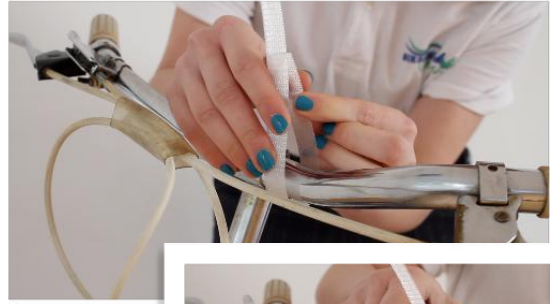


Pick a safe place to attach your blossom to your bike. Not near somewhere it could get tangled i.e: your gears, chain, pedals, wheels or brakes.

4.

Wrap the plastic packaging bind stem around itself and secure with a staple.

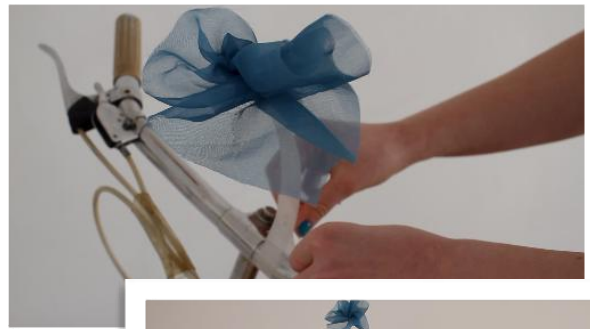
If you're using a cable/zip-tie, thread it around your bike and then through itself.



5

If you're using a cable/zip-tie, now use some tape to secure the flower head to the stem.

Use some more tape to secure the stem to the bike frame and make sure it stands up straight.



6.

Make some more blossoms and attach them to your bike! Be sure to take a photo of your creation - somewhere with lots of light and enough space to see your whole blossom bicycle.

Then, visit the Bikeaway Ventures website to upload your photo and register to take part!

<https://www.bikeawayventures.co.uk/>

